

SAMSUNG

**Clothes Dryers
Owner's Instructions**

**DV665JW
DV665JS**



Register your product at
www.samsung.com/global/register
Code No. : DC68-02369A-EN

the study. The study was approved by the local research ethics committee. The study was conducted in accordance with the Declaration of Helsinki. All participants gave their informed consent. The study was funded by the National Institute for Research in Dementia (NIHRD), the Medical Research Service (MRS), the National Institute of Mental Health (NIMH) and the National Institute on Aging (NIA).

Methods

Participants

Participants were recruited from the local community through newspaper advertisements, television and radio advertisements, and direct mailings. The study was advertised in the local newspaper, *The Daily News*, and on the local television station, *WABC-TV*. The study was also advertised on the local radio station, *WABC-AM*. The study was advertised in the local mailings, including the local newspaper, *The Daily News*, and the local television station, *WABC-TV*. The study was advertised in the local mailings, including the local newspaper, *The Daily News*, and the local television station, *WABC-TV*.

Procedure

Participants were recruited from the local community through newspaper advertisements, television and radio advertisements, and direct mailings. The study was advertised in the local newspaper, *The Daily News*, and on the local television station, *WABC-TV*. The study was also advertised on the local radio station, *WABC-AM*. The study was advertised in the local mailings, including the local newspaper, *The Daily News*, and the local television station, *WABC-TV*.

Measures

The study was advertised in the local newspaper, *The Daily News*, and on the local television station, *WABC-TV*. The study was also advertised on the local radio station, *WABC-AM*. The study was advertised in the local mailings, including the local newspaper, *The Daily News*, and the local television station, *WABC-TV*.

Results

The study was advertised in the local newspaper, *The Daily News*, and on the local television station, *WABC-TV*. The study was also advertised on the local radio station, *WABC-AM*. The study was advertised in the local mailings, including the local newspaper, *The Daily News*, and the local television station, *WABC-TV*.

Features

Delay Start

Consumers can program the dryer's start-up time for up to 24 hours after setting the program. It allows to dry when more economical electricity rates are in effect, or the appropriate time in which is most convenient for consumers to take out their clothes.

Freshen-up Program

Our Freshen-up program tumble-dries the garment in cool air set at a time of your choice, up to 50 minutes. This program makes it easy to freshen-up clothes that only require a little airing.

Sensor Dry & Fuzzy Logic Control

Both technologies bring you outstanding economic benefits as well as excellent drying performance. Fuzzy Logic Control determines how dry and gentle your laundry requires, ensuring careful treatment of your laundry. The sensor measures the temperature automatically and continuously in the most appropriate inner section of the dryer.

Various Drying Cycles & Fuzzy Logic Algorithm

Simply turn the Jog Dial to select one of the 11 automatic drying cycles, including normal, heavy duty and towels. Or let Fuzzy Logic Control measure the degree of dampness and automatically set the drying time. Precision drying never got easier than with Samsung.

Wrinkle-free Program

Our Wrinkle-free program tumble dries garments in warm air for 10 minutes. Simple & easy to smooth wrinkle of garments that have been stored away.

Easy Iron

Less ironing is needed as Samsung's Carefreewash safely cleans your soft, delicate cloths and easy-care fabrics. Developed by Samsung's globally recognized digital process technology, the Easy Iron function is a specialized laundry program that will help to reduce wrinkles on your delicate garments, freeing up the time you would have spent on ironing.

Stacking

For convenience of location, all dryers are designed to stack on the top of the washing machine with the Stacking Kit as well as to place next to the washing machine.

Safety Instructions

Read all instructions before using this appliance

Warning - It is extremely important that you read and adhere to the following instructions. Failure to do so could cause bodily injuries and/or property damage due to fire.

- Use this appliance only for its intended purpose as described in this Owner's Manual.
 - This dryer must be properly installed and located in accordance with the Installation Instructions before it is used.
 - Properly ground to conform with Local Codes. Follow details in Installation Instructions.
 - Located where the temperature is above 50°F(10°C) for satisfactory operation of the dryer control system. Do not install or store the dryer where it will be exposed to the weather.
 - Connect to a properly rated, protected and sized power supply circuit to avoid electrical overload.
 - Exhausting to the outside is **STRONGLY RECOMMENDED** to prevent large amounts of moisture and lint from being blown into the room. Carefully follow the Exhausting Details in the Installation Instructions.
 - Do not repair or replace any part of the appliance or attempt any servicing unless specifically recommended in this Owner's Manual.
 - When disconnecting this appliance pull by the plug rather than the cord to avoid damage to the cord or junction of cord and plug. Make sure that the cord is located so that it will not be stepped on, tripped over or otherwise subjected to damage or stress.

To Minimize the Possibility of a Fire Hazard

- Exhaust Duct - See Installation Instructions. Use only rigid metal or flexible metal 4" diameter ductwork for exhausting to the outside. USE OF PLASTIC OR OTHER COMBUSTIBLE DUCTWORK CAN CAUSE A FIRE. FOIL OR OTHER EASILY PUNCTURED DUCTWORK CAN CAUSE A FIRE IF IT COLLAPSES OR BECOMES OTHERWISE RESTRICTED IN USE OR DURING INSTALLATION.
- Do not use heat to dry articles containing rubber, plastic, or similar materials (such as padded bras, tennis shoes, galoshes, bath mats, rugs, bibs, pillows, baby pants, plastic bags, etc.) as these materials may melt or burn. Also, some rubber materials, when heated, can under certain circumstances produce fire by spontaneous combustion.
- Do not store items that may burn or melt (such as clothing, paper material, plastics or plastic containers, etc.) on top of the dryer during operation.
- Garments labeled "Dry Away from Heat" must not be put in your dryer.
- Do not wash or dry articles that have been cleaned in, washed in, soaked in, or spotted with combustible or explosive substances (such as wax, paint, gasoline degreasers, dry-cleaning solvents, kerosene, etc.) which may ignite or explode. Do not add these substances to the wash water. Do not use these substances around your washer and/or dryer during operation.
- Any article on which you have used a cleaning solvent, or which contains flammable materials (such as cleaning cloths, mops, towels used in beauty salons, restaurants or barber shops, etc.) must not be placed in or near the dryer until all traces of these flammable liquids or solids and their fumes have been removed. There are many highly flammable items used in homes such as: acetone, denatured alcohol, gasoline, kerosene, some household cleaners, some spot removers, turpentine, waxes, wax removers and products containing petroleum distillates.
- Clean the lint filter before each load to prevent lint accumulation inside the dryer or in the room. **DO NOT OPERATE THE DRYER WITHOUT LINT FILTER IN PLACE.**
- Keep the area around the exhaust opening, and around and underneath your appliances free from the accumulation of combustible materials, such as lint, paper, rags, chemicals, etc.
- Regularly inspect the exhaust duct to be sure it has not been crushed or otherwise restricted.
- The interior of the dryer cabinet and the exhaust duct connection inside the dryer should be cleaned every 2 to 3 years, or more often if needed, by a qualified service person.

Safety Instructions

To Minimize the Possibility of Injury



- Never reach into the dryer while the drum is moving. Before loading, unloading or adding clothes, wait until the drum has completely stopped.
- Do not dry fiberglass articles in your dryer. Skin irritation could result from the remaining glass particles that may be picked up by clothing during subsequent dryer uses.
- The laundry process can reduce the flame retardance of fabrics. To avoid such a result, the garment manufacturer's care instructions should be followed very carefully.
- Close supervision is necessary if this appliance is used by or near children. Do not allow children to play inside, on, or with this appliance or any discarded appliance. Dispose of discarded appliances and shipping or packing materials properly. Before discarding a dryer, or removing from service, remove the door of the dryer compartment.
- Keep all laundry aids (such as detergents, bleaches, fabric softeners, etc.) out of the reach of children, preferably in a locked cabinet. Observe all warnings on container labels to avoid personal injury.
- Keep the floor around your appliances clean and dry to reduce the possibility of slipping.
- To minimize the possibility of electric shock, unplug this appliance from the power supply before attempting any maintenance or cleaning (except the removal and cleaning of the lint filter).
- Do not tamper with the controls.
- Do not operate this appliance if it is damaged, malfunctioning, partially disassembled, or has missing or broken parts, including a damaged cord or plug.
- Never climb on or stand on the dryer.
- DO NOT place items exposed to cooking oils in your dryer. Items contaminated with cooking oils may contribute to a chemical reaction that could cause a clothes load to catch fire.

SAVE THESE INSTRUCTIONS

Table of Contents

Installation Instructions	A-1
INSTALLATION INSTRUCTIONS EXHAUST	A-1
EXHAUST LENGTH CALCULATION	A-2
EXHAUST DIRECTIONS	A-2
EXHAUST DUCT LOCATING DIMENSIONS	A-2
SPECIAL ACCESSORY	A-2
SPECIAL INSTALLATION REQUIREMENTS	A-3
ELECTRICAL POWER SUPPLY	A-3
Operating Instructions, Tips	B-1
CONTROL PANEL	B-1
HOW TO OPERATE YOUR DRYER	B-2
POLYESTER KNITS & PERMANENT PRESS DRYING TIPS	B-2
LOADING CLOTHES	B-2
PROGRAM SELECTING GUIDE	B-3
PROGRAM CHART	B-4
Drying Times	B-4
Care and Cleaning	C-1
CLEANING FILTER	C-1
DRYER EXTERIOR	C-1
DRYER EXHAUST	C-2
INSIDE THE DRYER CABINET	C-2
Problem Solver	D-1
QUESTIONS? USE THIS PROBLEM SOLVER	D-1
Appendix	E-1
WARRANTY INFORMATION	E-1

Installation Instructions

INSTALLATION INSTRUCTIONS EXHAUST



Installation and service must be performed by a qualified installer or service agency.

IMPORTANT: Have your dryer installed properly.

NOTE: The **WARNING** and **IMPORTANT** instructions appearing in this manual are not meant to cover all possible conditions and situations that may occur. It must be understood that common sense, caution, and carefulness are factors that **CANNOT** be built into the dryer. These factors **MUST BE** supplied by the person(s) installing, maintaining, or operating the dryer.

Failure to install, maintain, and/or operate this machine according to the manufacturer's instructions may result in conditions which can produce bodily injury and/or property damage.

This dryer comes ready for top exhausting.

WARNINGS

- DO NOT USE NON METALLIC FLEXIBLE DUCT.
- Never use flexible duct inside the dryer.
- Do not terminate exhaust in a chimney, range hood, gas vent, floor or attic. The combination of lint and grease could create a fire hazard or damage.
- Provide an access for inspection and cleaning the exhaust system at least once a year.

EXHAUST LENGTH

The MAXIMUM ALLOWABLE length of the exhaust system depends upon the type of duct, number of turns, the type of exhaust hood (wall cap), and all conditions noted below. The maximum allowable length for both rigid and flexible metal duct is shown in table 1(next page). More than four 90° turns is not recommended.

EXHAUST SYSTEM CHECK LIST HOOD or WALL CAP

- Terminate in a manner to prevent back drafts or entry of birds or other wildlife.
- Termination should present minimal resistance to the exhaust air flow and should require little or no maintenance to prevent clogging.
- Wall caps must be installed at least 300 mm (12") above ground level or any other obstruction with the opening pointed down.
- If roof vents or louvered plenums are used, they must be equivalent to a 100 mm (4") dampered wall cap, in regard to resistance to air flow, prevention of back drafts and maintenance required to prevent clogging.

SEPARATION OF TURNS

Separate all turns by at least 1m(3ft.) of straight duct, including distance between last turn and dampered wall cap. If two turns must be closer than 1 m (3 ft.) deduct 3 m (10 ft.) from the maximum lengths shown in the table for each occurrence.

TURN OTHER THAN 90°

- One turn of 45° or less may be ignored.
- Two 45° turns should be treated as one 90°.
- Each turn over 45° should be treated as one 90°.

SEALING OF JOINTS

- All joints should be tight to avoid leaks. The male end of each section of duct must point away from the dryer.
- Do not assemble the duct work with fasteners that extend into the duct. They will serve as a collection point for lint.
- Duct joints can be made air and moisture-tight by wrapping the overlapped joints with duct tape.

INSULATION

- Duct work which runs through an unheated area or is near an air conditioning duct, should be insulated to reduce condensation and lint build up and be sloped down toward outdoors.

NOTE: Never install screen inside exhaust duct.



WARNING: THE DRYER MUST EXHAUST TO THE OUTDOORS.

TO PREVENT LARGE AMOUNTS OF LINT AND MOISTURE FROM ACCUMULATING AND TO MAINTAIN DRYING EFFICIENCY, THIS MACHINE MUST BE EXHAUSTED OUTDOORS.

Installation Instructions

EXHAUST LENGTH CALCULATION

Table 1: RECOMMENDED MAXIMUM LENGTH

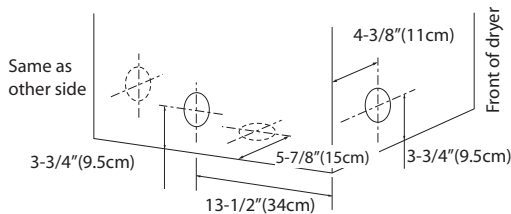
ELECTRIC DRYERS				
Weather Hood Type				
Recommended			Use only for short run installations	
 ↔4"(10.16cm)			 ↔2 1/2"(6.35cm)	
No. of 90° elbows	Rigid	Metallic Flexible*	Rigid	Metallic Flexible*
0	14m(46ft.)	9m(30ft.)	11m(37ft.)	7m(24ft.)
1	11m(38ft.)	7.5m(25ft.)	9m(30ft.)	6m(20ft.)
2	9m(31ft.)	6m(20ft.)	6.5m(22ft.)	4m(14ft.)
3	7m(24ft.)	5m(16ft.)	4.5m(15ft.)	3m(10ft.)

* Do not use non metallic flexible duct.

EXHAUST DIRECTIONS

All dryers shipped from the factory are set up for rear exhausting. However exhausting can be on the right or left side of the cabinet or the bottom of the dryer.

- Remove access panel at back of dryer to gain access to internal ducts.
- Disconnect duct exhaust from blower housing.
- Remove desired knockout plate (either right or left side).
- Attach a 90° elbow duct to blower housing and facing desired opening.
- Reinstall rear access panel.



EXHAUST DUCT LOCATING DIMENSIONS

NOTE: Non-metallic ducts must never be used inside dryer cabinet.



SPECIAL ACCESSORY

Stacking kit (Model no:SK-2A)

You can obtain the stacking kit from your retailer.

With this kit you can combine your dryer with a Samsung automatic washing machine to a washing and drying column.

The appliances are stacked in a space-economizing manner in this arrangement, the washing machine at the bottom and the dryer at the top!



Installation Instructions

SPECIAL INSTALLATION REQUIREMENTS

ALCOVE OR CLOSET INSTALLATION

- **WARNING:** To reduce the risk of fire, this dryer **MUST BE EXHAUSTED TO THE OUTDOORS.** See **EXHAUST INFORMATION** section.
- Minimum clearances between dryer cabinet and adjacent walls or other surfaces are : 0" either side 1" front and rear
- Minimum vertical space from floor to overhead cabinets, ceilings, etc. is 52"(132cm).
- Closet door must be louvered or otherwise ventilated and must contain a minimum of 60 sq. in. of open area equally distributed. If this closet contains both a washer and a dryer, doors must contain a minimum of 120 sq. in. of open area equally distributed.

MINIMUM CLEARANCES OTHER THAN ALCOVE OR CLOSET INSTALLATIONS.

- Minimum clearances to combustible surfaces: 0 clearance both sides and 25 mm (1") rear.

MOBILE HOME INSTALLATION

- The dryer must be exhausted to the outdoors with the termination securely fastened to the mobile home structure. (See **EXHAUST INFORMATION** section.)
- The exhaust **MUST NOT** be terminated underneath a mobile home.
- Provisions must be made for the introduction of outside air into the dryer. The free air opening shall not be less than 80 cm² (12 in²)
- The exhaust duct material **MUST BE METAL.**
- The dryer must be attached to the floor following instructions available from the dealer.
- Installation must comply with the current **CAN/CSA Z240 MH** series Mobile Home Installation Codes.

NOTE: CONSIDERATION MUST BE GIVEN TO INSTALLING AND SERVICING THE APPLIANCE.

ELECTRICAL POWER SUPPLY

CAUTION: NEVER USE AN EXTENSION CORD WITH THIS APPLIANCE.

- This dryer must be connected to an individual circuit identical to the one specified on the rating plate of the loading port, protected by fuses or circuit breaker conforming to local codes.
- THIS APPLIANCE MUST BE PROPERLY GROUNDED.**
- The power cord of this appliance is equipped with a three (3) or four (4) prong plug which mates with an appropriate dryer wall receptacle.

GROUNDING INSTRUCTIONS

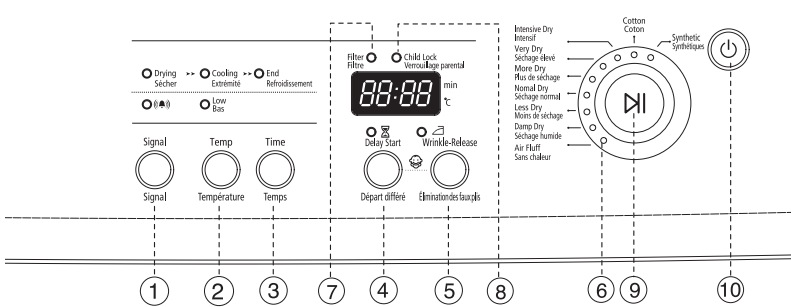
- This appliance must be grounded. In the event of malfunction or breakdown, grounding will reduce the risk of electric shock by providing a path of least resistance for electric current. The plug must be plugged into an appropriate outlet that is properly installed and grounded in accordance with all local codes and ordinances.

WARNING:

- Improper connection of the equipment grounding conductor can result in a risk of electric shock. Check with a qualified electrician or serviceman if you are in doubt as to whether the appliance is properly grounded.
- Do not modify the plug provided with the appliance - if it will not fit the outlet, have a proper outlet installed by a qualified electrician.

Operating Instructions, Tips

CONTROL PANEL



During DRYcycle, displayed remaining time may be increased or decreased. Such a condition is not a system failure, but a DRYfunction optimization process. Load less than 8lb to get the best drying result. (Max. DRYtime is 3 hours.)

1. SIGNAL button

Initial mode is set to OFF at the factory, and no completion buzzer makes sound. Push the SIGNAL button to turn the SIGNAL lamp ON and make the completion buzzer sound.

2. TEMP button

Initial mode is set to OFF at the factory. Push TEMP button to select LOW temperature and turn lamp ON.

3. TIME button

TIME button displays 1:25 minutes at its initial mode. You can decrease each 10 minutes by pushing the button each one time. (1:25 → 1:15 → 1:05 → 25 → 15 → 1:25)

4. DELAY START button

DELAY START button is to be selected in order of 1 hour 2 hours 3 hours ...24 hours Cancel.

5. WRINKLE-RELEASE button

Push Wrinkle-Release button to run COOL DOWN 10 minutes after adjusting temperature for 10 minutes.

6. SELECTION OF CYCLE

Turn Dial to indicate cycles in the following order.
 Cotton+More Dry ↔ Cotton+Nomal Dry ↔ Cotton+Less Dry ↔ Cotton+Damp Dry ↔ Air Fluff ↔ Synthetic+Intensive Dry ↔ Synthetic+Very Dry ↔ Synthetic+More Dry ↔ Synthetic+Nomal Dry ↔ Synthetic+Less Dry ↔ Synthetic+Damp Dry ↔ Air Fluff ↔ Cotton+Intensive Dry ↔ Cotton+Very Dry ↔ Cotton+More Dry

7. FILTER lamp

Turn the system ON to let FILTER lamp flicker 3 times. When a drying cycle is finished, FILTER lamp turns ON to display cleaning instruction of filter.

8. CHILD LOCK lamp

When the system turns ON, push Wrinkle-Free button and DELAY START button in order to turn CHILD LOCK lamp ON. From this time, all buttons do not operate. To cancel the mode, push DELAY START button and Winkle-Free button in reverse order.

9. START/PAUSE button

Press the button to start and pause the system.

10. POWER button

Press the button once to turn the system ON, press it once more to turn the system OFF. When the system turns ON for longer than 10 minutes without pressing any buttons, it automatically turns OFF.

Operating Instructions, Tips

HOW TO OPERATE YOUR DRYER

TO DRY CLOTHES USING PROGRAMS

1. Open the door and put the laundry in the dryer.
2. Press the power button.
3. Turn the Dial to choose the program.
You will see the indications light up on the control panel.
Cotton+More Dry ↔ Cotton+Nomal Dry ↔ Cotton+Less Dry ↔ Cotton+Damp Dry ↔ Air Fluff ↔ Synthetic+Intensive Dry ↔ Synthetic+Very Dry ↔ Synthetic+More Dry ↔ Synthetic+Nomal Dry ↔ Synthetic+Less Dry ↔ Synthetic+Damp Dry ↔ Air Fluff ↔ Cotton+Intensive Dry ↔ Cotton+Very Dry ↔ Cotton+More Dry
4. You can control the temperature button. (Cotton course)
5. Press the Start/Pause button and dry cycle will begin.

TO DRY CLOTHES MANUALLY

1. Open the door and put the laundry in the dryer.
2. Press the power button.
3. Press the Time button to set drying time and to make dry your laundry as you want.
You may select drying time(1:25→1:15→1:05→..... 25→15→1:25) in order by pressing the button continuously.
4. Press the Start/Pause button and dry cycle will begin.

POLYESTER KNITS & PERMANENT PRESS DRYING TIPS

- **DO NOT OVERLOAD** - Garments being dried or dewrinkled should tumble freely.
- **REMOVE CLOTHES PROMPTLY**- To help prevent wrinkling, remove clothes from the dryer promptly at the end of the drying cycles.
- **PLACE ON HANGERS**- Permanent press and polyester knit garments look best if placed on hangers after drying.

LOADING CLOTHES

- Don't overload your dryer. Crowded loads don't dry efficiently and clothes may be unnecessarily wrinkled.
- As a general rule, sort clothes by surface texture, fabric, colour and weight, as you would for your washer.
- Do not add fabric softener sheets once the load has become warm.
- Do not overload. This wastes energy and caused wrinkling.
- Do not dry the following items: fiberglass items, woolens, rubber-coated items, plastics, items with plastic trim and foam-filled items.
- Clothing with metallic components may damage the drum interior during drying.

Caution

- The display indicates remaining time by automatically calculating the quantity of clothing and the content of water. During the first phase of the drying cycle, the display will indicate the total estimated time of the dry.
- During the drying cycle, you will again be able to verify the degree of dryness of the clothing and then increase or decrease the remaining time according to the desired results. (Max. DRY time is 3 hours)

Operating Instructions, Tips

PROGRAM SELECTING GUIDE

Programs		Laundry Type	Example for
Cotton	Intensive	Heavy weight or mult-layered fabrics	Track suits, Towelling materials, bath robes
	Very	Fabrics of medium weight, articles not made up of mult-layers	Jeans, Towel laundry, hand towels
	More	Normal cotton and linen articles	Sheets, and pillowcase, tablecloths, cotton trousers
	Nomal	lightweight materials	Cotton shirt and underwear
	Less	Cotton and linen articles to be ironed.	Tablecloths and shirts
	Damp	For leaving items partially damp	Cotton underwear
Synthetic	Intensive	Heavyweight or mult_layered fabrics	Sweatshirts, bed linen and table linen
	Very	Fabrics of medium weight	Easycare fabric shirts, baby clothes and wool
	More	Normal synthetic fabrics	Delicate dresses, skirts, shirts
	Nomal	Lightweight materials	Blouses, dress shirts
	Less	Very delicate fabrics	Easy care fabric and blouses
	Damp	For leaving items partially damp	Delicate underwear

Operating Instructions, Tips

PROGRAM CHART

Programs		Low Temp Select	Delay Start	Estimated Time(3.6kg)	Remark
Cotton	Intensive	High/Low	O	1:36	
	Very		O	1:33	
	More		O	1:30	
	Nomal		O	1:23	
	Less		O	1:18	
	Damp		O	1:08	
Synthetic	Intensive	Low	O	1:26	
	Very		O	1:23	
	More		O	1:20	
	Nomal		O	1:13	
	Less		O	1:08	
	Damp		O	58	
Wrinkle-Free		X	X	20	
Time Dry		High/Low	X	1:25 ~ 15	
Aring		X	X	50 ~ 10	No Heating

Drying Times

It is impossible to give exact drying times. Conditions from home to home vary and directly affect drying times. The length of time it takes to dry loads will depend on several things.

- Load Size
- Type of fabric, washer, and spin speed will determine moisture in the fabric.
- Heat and moisture in the room. Damp air coming into the dryer will increase drying time.
- Installation (Length of exhaust duct, etc)
- Electric voltage.

If you select an automatic cycle, the machine will determine the time needed for drying.

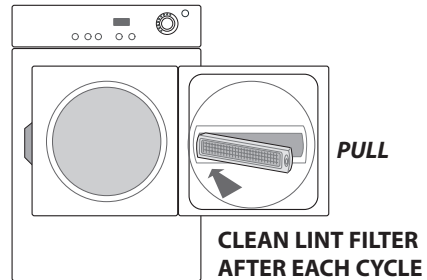
During the DRYcycle, the remaining time may be increased or decreased in order to optimize dryness.

Care and Cleaning

CLEANING FILTER

Clean the filter before every dryer use

Slide the grid out as shown. Clean the lint filter. Put your moistened fingers at one corner of the filter and wipe in a sideways motion all the way across to the other corner.



Do not operate the dryer without the grid in place.

Do not operate the dryer without the filter in place.

Periodically, remove the lint filter (it snaps in and out) and insert the suction hose adapter from your vacuum cleaner into the opening. Do the same through the rectangular opening at top or bottom of the door and at the louvers on the cabinet front.

DRYER EXTERIOR

Wipe off any spills or washing compounds. Wipe or dust with a damp cloth. Try not to strike the surface with sharp objects.

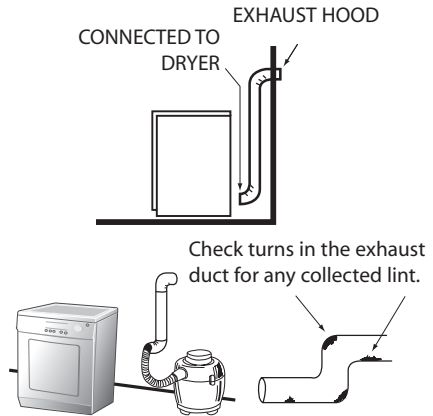
Dryer control panel and finishes may be damaged by some laundry pre-treatment soil and stain remover products if such products are sprayed on or have direct contact with the dryer. Apply these pre-treatment products away from the dryer. The fabric may then be washed and dried normally. Damage to your dryer caused by pre-treatment products is not covered by your warranty.

Care and Cleaning

DRYER EXHAUST

MAXIMIZE YOUR DRYER EFFICIENCY BY KEEPING THE EXHAUST DUCT CLEAN.

1. Disconnect or Turn off electrical power.
2. Disconnect duct from dryer.
3. Clean exhaust duct from the end where dryer is connected to the exhaust hood using:
 - the hose attachment of your vacuum cleaner
 - a dust rag attached to a pole (for straight stretches) or to a drain cleaning wire (for less accessible areas).



4. Inspect exhaust hood. To minimize resistance to the exhaust air flow:
 - flap must move freely (you may check with a mirror);
 - flap should be fully open when dryer is on;
 - ensure that no wildlife (birds, insects,...) have nested inside the duct.

INSIDE THE DRYER CABINET

CLEANING LINT FROM YOUR DRYER

Combustible lint may collect on the inside of the dryer cabinet. **CLEAN EVERY 2 TO 3 YEARS OR MORE OFTEN DEPENDING ON USAGE.** Cleaning should be done by a qualified service person.

ALWAYS VERIFY PROPER OPERATION AFTER SERVICING

Problem Solver

QUESTIONS? USE THIS PROBLEM SOLVER

PROBLEM	POSSIBLE CAUSE
DRYER WON'T START	<ul style="list-style-type: none"> • Dryer unplugged. Make sure power cord is plugged in. • No power to dryer. Check fuses and circuit breakers to make sure dryer is getting current. Most electric dryers use two. • Controls improperly set. Make sure the controls are and that the Start button is pressed. Opening the door during operation stops the dryer. To restart, close the door and push the Start button. • Dryer door is open. Close door securely - dryer will not run with door open. • Circuit is overloaded. Do not operate other appliances on the same electrical outlet or circuit while the dryer is operation.
CLOTHES TAKE TOO LONG TO DRY	<ul style="list-style-type: none"> • Controls improperly set. Check all controls to make sure they are correctly set for the load you want to dry. See the How to Operate Your Dryer section. See the Care and Cleaning section. • Clogged lint filter. Clean the filter before every load. Periodically remove lint filter and clean area under it with vacuum cleaner. • Improper ducting. Make sure dryer is ducted in accordance with the Installation Instructions. • Obstruction in exhaust ducting. Make sure ducting is clean and free of obstruction; make sure damper in outside wall cap operates easily. If flexible ducting is used, be sure it is not kinked and is properly installed according to the Installation Instructions. • Blown fuses or tripped circuit breakers. Check household fuses or circuit breakers. Most electric dryers use two. It is possible for one to be blown or tripped and the dryer still tumbles without heat. • Improper sorting. Do not mix heavy, hard-to-dry items with lightweight article. • Large loads of moisture-holding fabrics, such as beach towels, take a long time to remove moisture. • Too many items in dryer. Dry only one washer load at a time. Do not combine loads. • Too few items in dryer. If drying only one article, add two more similar articles, even if dry, to ensure proper tumbling.
SHRINKAGE, GENERA	<ul style="list-style-type: none"> • Some fabrics will shrink whether machine washed and tumble dried or washed by hand and drip dried; others may be safely washed but will shrink in a dryer. Follow Garment Manufacturers' Care Labels exactly. If in doubt, do not machine wash or tumble dry.
WRINKLING	<ul style="list-style-type: none"> • Leaving clothes in dryer after tumbling stops. Remove clothes promptly and hang them immediately. • Improper loads. Avoid laundering heavy Permanent Press items, such as work clothes, with lighter Permanent Press items, such as shirts or blouses. Do not wash or dry Permanent Press with regular laundry. • Failure to use fabric softener. Proper use of fabric softener will minimize wrinkling.
TO REMOVE WRINKLES	<p>Try one or more of these suggestions</p> <ul style="list-style-type: none"> • If unsuccessful, retumble on high heat for 10-12 minutes and hang immediately • Iron carefully • Send to dry cleaners for pressing • Some wrinkles may remain which cannot be removed.*

IF DRYER STILL DOES NOT OPERATE, call for Service. GIVE THE MODEL AND SERIAL NUMBERS AND DESCRIBE THE SYMPTOMS OF THE DRYER.

Appendix

WARRANTY INFORMATION

Limited Warranty for Original Purchaser

This Samsung product is warranted by Samsung Electronics Canada, Inc. (hereafter referred to as SECA) against manufacturing defects in material or workmanship for the following periods:

Labor: 1 year (in-home)
Parts: 1 year

SECA further warrants that if this product fails to operate properly within the specified warranty period and the failure is due to improper workmanship or defective material, SECA will repair or replace the product at its option.

All warranty repairs or part replacements must be performed by a SECA Authorized Service Center. (To find the nearest SECA Service Center, call 1-800-SAMSUNG or visit our web site at www.samsungcanada.com.)

Obligation to the Original Owner

The original dated sales receipt must be retained by the customer and is the only acceptable proof of purchase. It must be presented to a SECA Authorized Service Center at the time service is requested before warranty services are rendered. On all carry-in models, transportation to and from the Authorized Service Center is the responsibility of the customer.

Exclusions of the Warranty

This warranty does not cover damage due to accident, fire, flood, and/or other Acts of God, misuse, incorrect line voltage, improper installation, improper or unauthorized repairs, commercial use, or damage that occurs during shipping. Customer adjustments which are explained in this owner's manual are not covered under the terms of this warranty. This warranty will automatically be voided for any unit found with a missing or altered serial number. This warranty is valid only on products purchased and used in the Canada.

SAMSUNG ELECTRONICS NORTH AMERICAN LIMITED WARRANTY STATEMENT

Subject to the requirements, conditions, exclusions and limitations of the Original Limited Warranty supplied with Samsung Electronics (SAMSUNG) products, and the requirements, conditions, exclusions and limitations contained herein, SAMSUNG will additionally provide Warranty Repair Service in the United States on SAMSUNG products purchased in Canada, and in Canada on SAMSUNG products purchased in the United States, for the warranty period originally specified, and to the Original Purchaser only.

The above described warranty repairs must be performed by a SAMSUNG Authorized Service Center. Along with this Statement, the Original Limited Warranty Statement and a dated Bill of Sale as Proof of Purchase must be presented to the Service Center. Transportation to and from the Service Center is the responsibility of the purchaser.

Conditions covered are limited only to manufacturing defects in material or workmanship, and only those encountered in normal use of the product.

Excluded, but not limited to, are any original specified provisions for, in-home or on-site services, minimum or maximum repair times, exchanges or replacements, accessories, options, upgrades, or consumables. For the location of a SAMSUNG Authorized Service Center, please call toll-free:

In the United States: 1-800-SAMSUNG (1-800-726-7864)

In Canada: 1-800-SAMSUNG

Or on-line at:

WWW.SAMSUNGUSA.COM and WWW.SAMUNGCANADA.COM



Contact SAMSUNG WORLD WIDE

If you have any questions or comments relating to Samsung products, please contact the SAMSUNG customer care center.

Pays	Service Consommateurs☎	Site web
CANADA	1-800-SAMSUNG (7267864)	www.samsung.com/ca
U.S.A	1-800-SAMSUNG (7267864)	www.samsung.com